

Artesia Public Schools | 9th Grade Academy

Steering Committee Meeting | September 18, 2014



Agenda

- 1. Introductions**
 - *Your commitment*
 - *Your role*
- 2. Design Process**
- 3. Projected Schedule Overview**
- 4. Goal Setting**
- 5. Review Preliminary Program**
- 6. Next Steps**

Design Committee Meetings



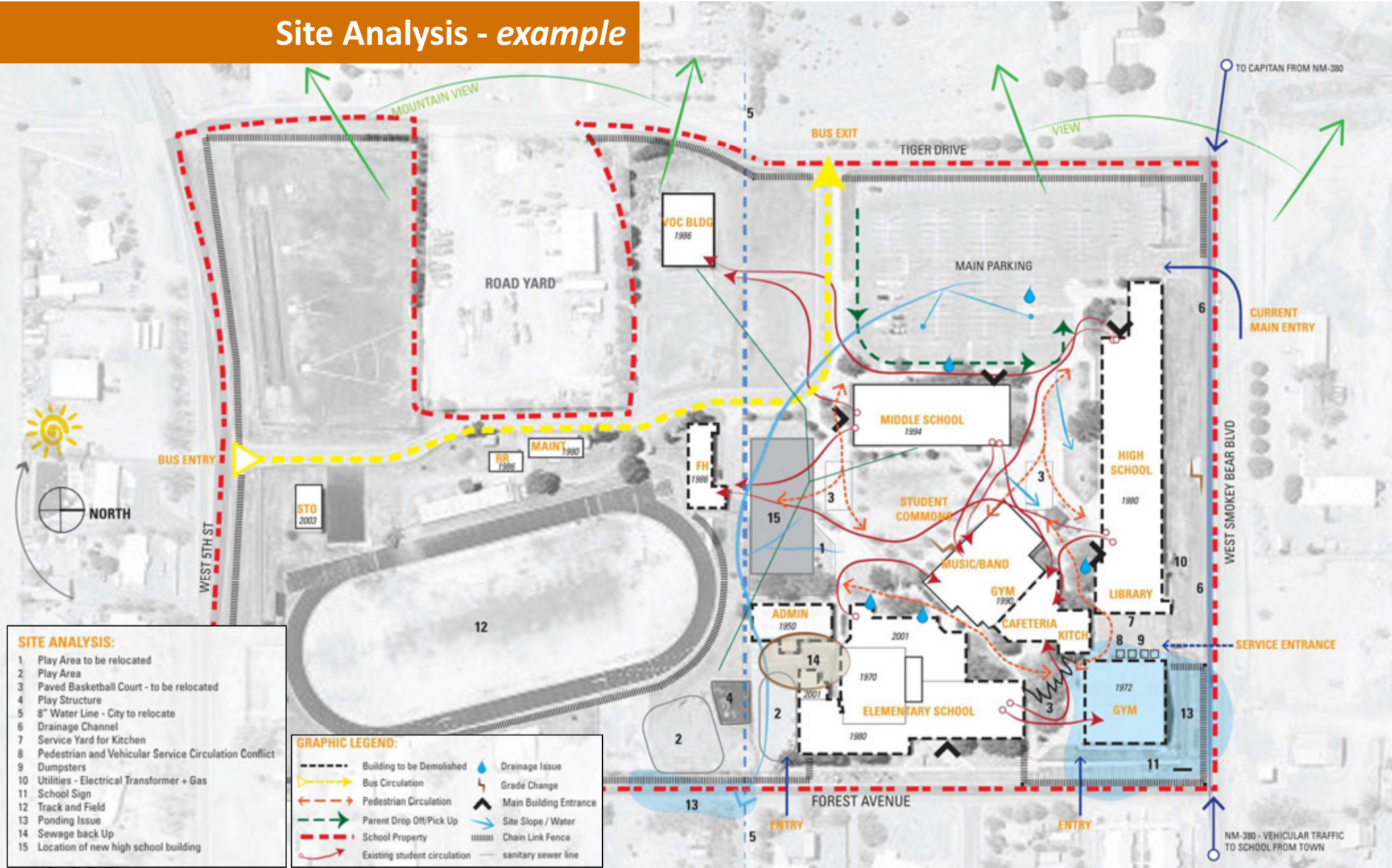
Your Role

Participate and be honest

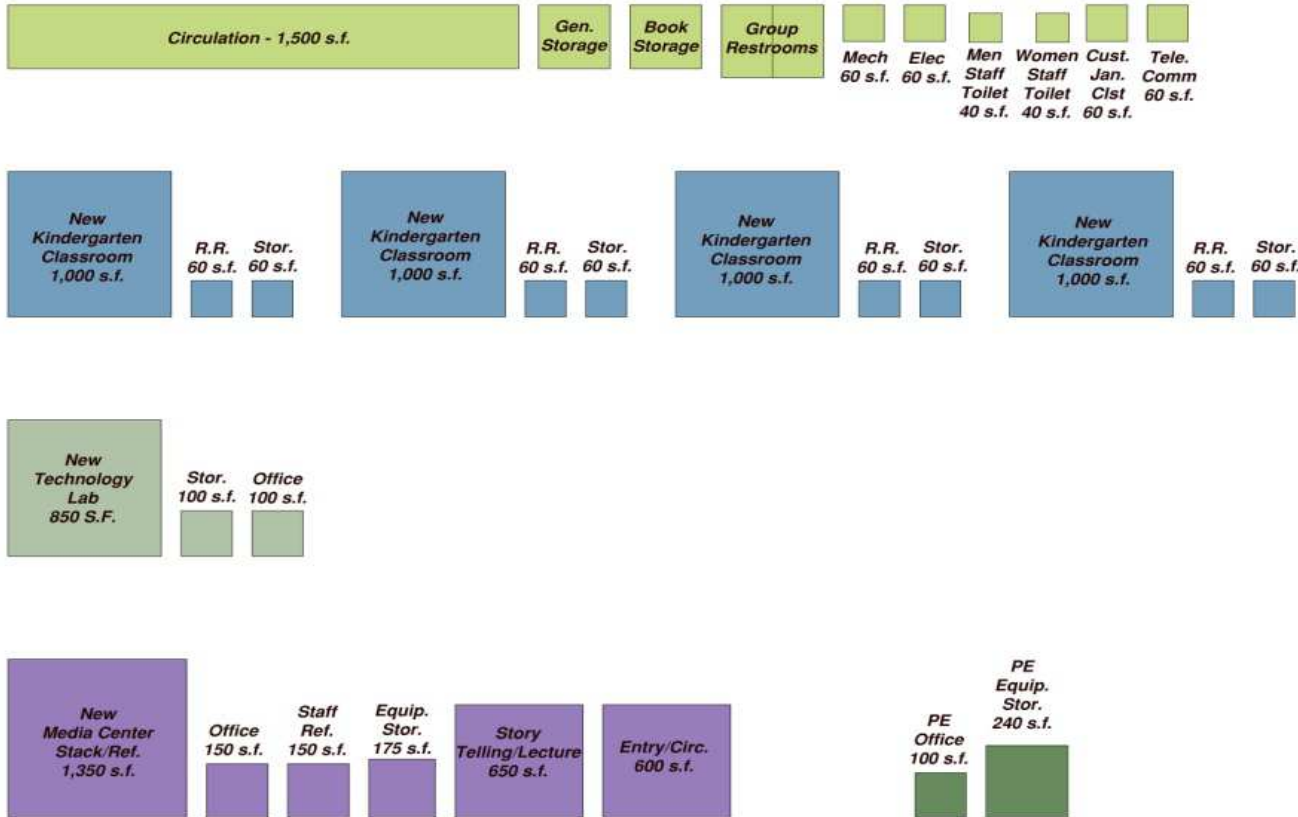
Represent your role and the broader group

Act as an ambassador

Site Analysis - example



Programming Phase



Graphic Program

Renewal Independent School District - Pease Elementary School
SUMMARY OF SPACES

WORKSHEET		SUMMARY OF SPACES				
Enter Grade Configuration	60					
Enter Student Capacity	170/20					
Square Feet Per Student	36,236					
Total Gross Square Feet Funded	36,236					
SELECT ONE: <input checked="" type="checkbox"/> Single Story Building <input type="checkbox"/> Multistory Building	0					
Plus Vertical Circulation (for Multistory Buildings) Area Allowable	0					
Total Adjusted POS Gross Square Footage	36,236					
PROGRAM AREA		New SF	Existing SF	Renovation SF	Demolition SF	TOTAL SF
Academic Core Spaces	4,489	14,400	2,818	0	0	16,300
Special Education Spaces	1,895	624	1,895	1,170	0	3,500
Administrative Spaces	1,181	1,217	1,098	1,181	1,217	4,217
Media Center Spaces	3,071	1,800	0	1,800	0	3,071
Computer Lab	1,000	850	0	850	0	1,000
Visual Arts Spaces	0	0	0	0	0	0
Music Spaces	0	0	0	0	0	0
Physical Education Spaces	340	3,500	0	0	0	3,500
Food Services	600	3,360	0	600	3,360	4,560
Building Services	2,470	9,971	834	0	11,981	14,981
Facility Total	18,883	38,832	6,244	5,981	45,963	
Construction Factor (10% multiplied by the facility total)	0.10	3,883	726	624	598	5,831
Actual Gross Square Feet Developed	19,236	39,612	7,244	6,579	46,794	
Adjusted Existing Area						733
Total Adjusted Gross Square Footage Developed						47,527
Difference of SF developed from SF allowable						1,291

Renewal Independent School District - Pease Elementary School
ACADEMIC CORE SPACES

Space	New SF			Existing SF			Renovation SF		Demolition SF		TOTAL SF			
	Qty	SF	Area	Qty	SF	Area	SF	SF	Qty	SF	Area	Qty	SF	Area
State-Standard Pre-K Classroom	0	0	0	0	0	0	0	0	0	0	0	0	0	0
Kindergarten Classroom	4	1,000	4,000	0	0	0	0	0	0	0	0	4	4,000	4,000
Kindergarten Restroom	10	60	600	0	0	0	0	0	0	0	0	10	60	600
Elementary Classroom	7	0	0	10	2,818	4,100	0	0	0	0	0	17	2,818	7,000
Elementary Restroom	0	0	0	0	0	0	0	0	0	0	0	0	0	0
Academic Core Total		4,489	14,400		2,818	4,100						4	4,000	18,300

Renewal Independent School District - Pease Elementary School
SPECIAL EDUCATION SPACES

Space	New SF			Existing SF			Renovation SF		Demolition SF		TOTAL SF			
	Qty	SF	Area	Qty	SF	Area	SF	SF	Qty	SF	Area	Qty	SF	Area
Special Education Classroom	1	1,895	1,895	0	0	0	0	0	0	0	0	1	1,895	1,895
Special Education Restroom	1	624	624	0	0	0	0	0	0	0	0	1	624	624
Special Education Total		1,895	1,895		624	624						2	2,519	2,519

Renewal Independent School District - Pease Elementary School
ADMINISTRATIVE SPACES

Space	New SF			Existing SF			Renovation SF		Demolition SF		TOTAL SF			
	Qty	SF	Area	Qty	SF	Area	SF	SF	Qty	SF	Area	Qty	SF	Area
Reception Area	1	100	100	0	0	0	0	0	0	0	0	1	100	100
Secretarial Area	1	100	100	0	0	0	0	0	0	0	0	1	100	100
Principal's Office	1	100	100	0	0	0	0	0	0	0	0	1	100	100
Assistant Principal's Office	1	100	100	0	0	0	0	0	0	0	0	1	100	100
General Storage	1	100	100	0	0	0	0	0	0	0	0	1	100	100
Administrative Total		1,181	1,217		1,098	1,098						4	4,000	4,217

Renewal Independent School District - Pease Elementary School
LIBRARY/MEDIA CENTER SPACES

Space	New SF			Existing SF			Renovation SF		Demolition SF		TOTAL SF			
	Qty	SF	Area	Qty	SF	Area	SF	SF	Qty	SF	Area	Qty	SF	Area
Library (Media & Reference)	1	1,350	1,350	0	0	0	0	0	0	0	0	1	1,350	1,350
Library Office	1	150	150	0	0	0	0	0	0	0	0	1	150	150
Equipment Storage	1	175	175	0	0	0	0	0	0	0	0	1	175	175
Entry Area	1	60	60	0	0	0	0	0	0	0	0	1	60	60
Entry/Circulation/Distribution	1	600	600	0	0	0	0	0	0	0	0	1	600	600
Staff Development Area	1	175	175	0	0	0	0	0	0	0	0	1	175	175
Media Center Total		3,071	3,071		1,800	1,800						6	3,071	3,071

Renewal Independent School District - Pease Elementary School
TECHNOLOGY AIDED INSTRUCTION

Space	New SF			Existing SF			Renovation SF		Demolition SF		TOTAL SF			
	Qty	SF	Area	Qty	SF	Area	SF	SF	Qty	SF	Area	Qty	SF	Area
Technology Lab	1	100	100	0	0	0	0	0	0	0	0	1	100	100
Storage	1	100	100	0	0	0	0	0	0	0	0	1	100	100
Office	1	100	100	0	0	0	0	0	0	0	0	1	100	100
Media Center Total		1,000	1,000		850	850						3	1,850	1,850

Renewal Independent School District - Pease Elementary School
PHYSICAL EDUCATION SPACES

Space	New SF			Existing SF			Renovation SF		Demolition SF		TOTAL SF			
	Qty	SF	Area	Qty	SF	Area	SF	SF	Qty	SF	Area	Qty	SF	Area
Gymnasium Area	1	3,500	3,500	0	0	0	0	0	0	0	0	1	3,500	3,500
Class Buffer	1	100	100	0	0	0	0	0	0	0	0	1	100	100
Office	1	100	100	0	0	0	0	0	0	0	0	1	100	100
P. E. Equipment Storage	1	240	240	0	0	0	0	0	0	0	0	1	240	240
Entry Vestibule	1	100	100	0	0	0	0	0	0	0	0	1	100	100
Physical Education Total		340	3,500		3,500	3,500						5	3,500	3,500

Programming Phase

The D-level educational instruction room will provide space for up to eight D-level students. The room will have a separate shower room with changing table, storage, and a kitchenette. It will be near the washer/dryer room and clothes bank, shared with the student health center.

Exhibit 5-16
Special Education
Cluster Relationship
Diagram

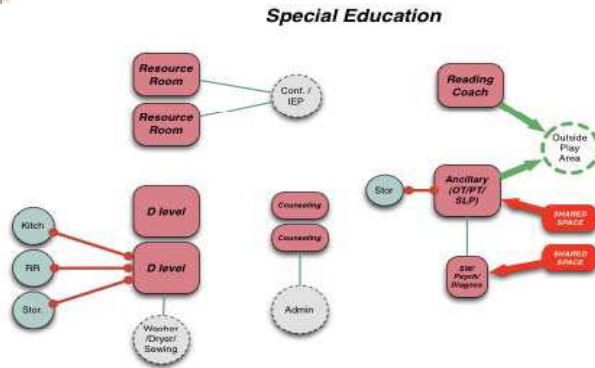
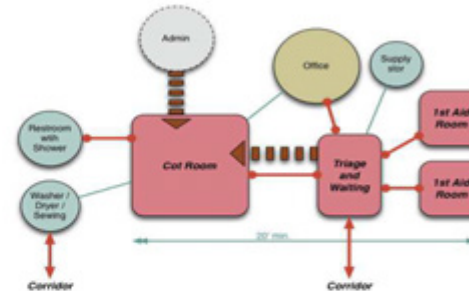
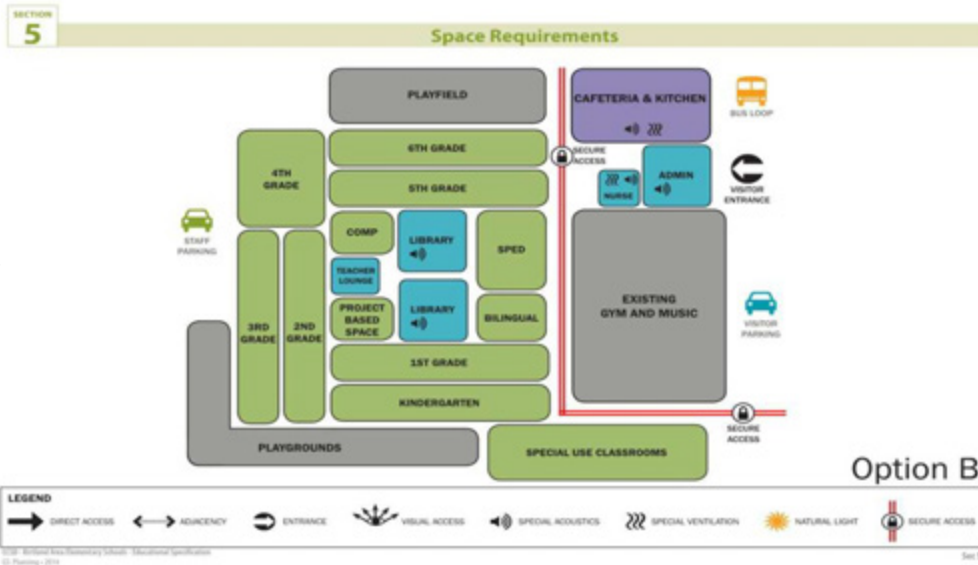


Exhibit 5-30
Student Health Office
Relationship Diagram



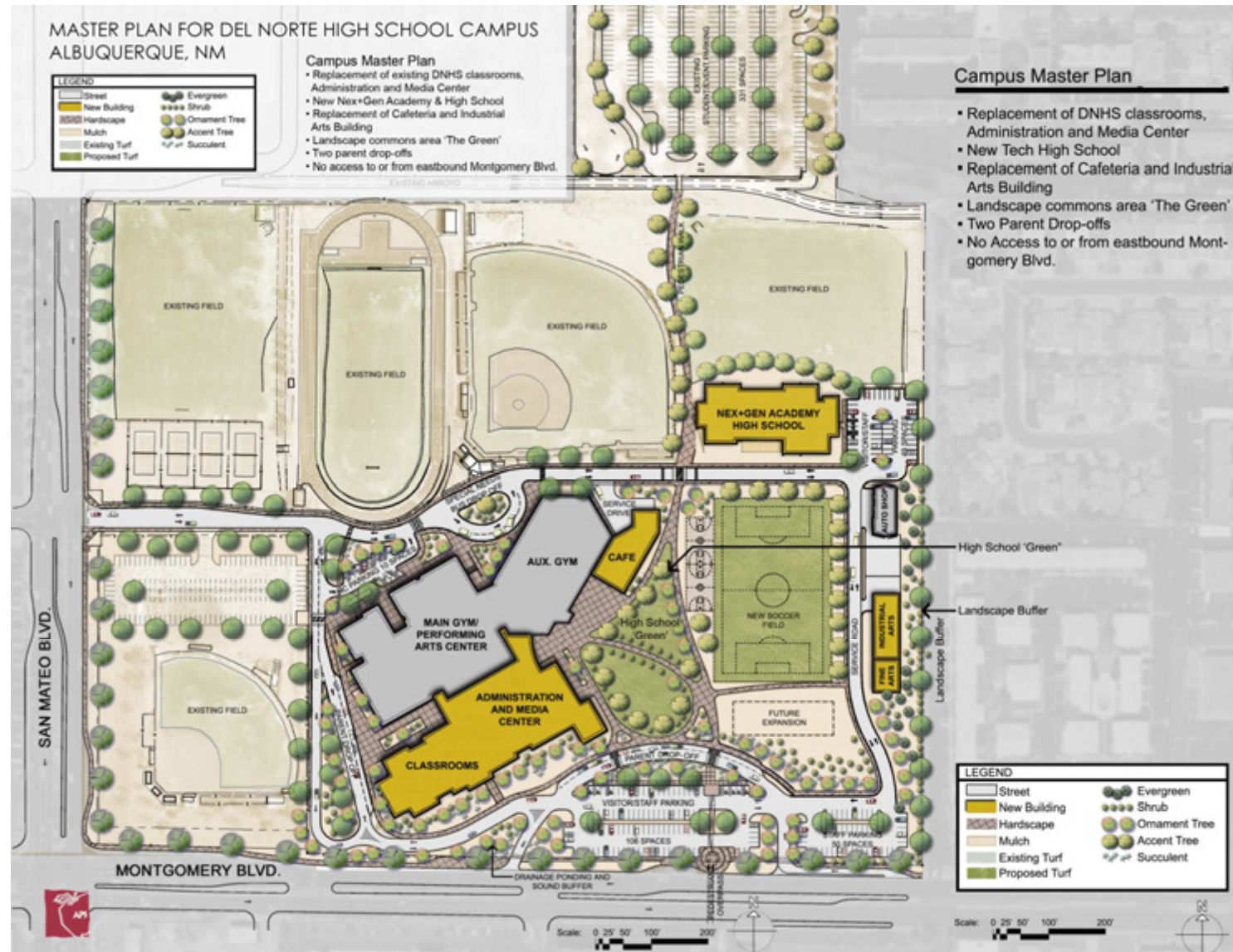
Student Health Office
The main part of the health office consists of the first aid area, where first aid is administered, and the cot area for sick students waiting to be transported. The nurse's office accommodates administrative activities, conferences, and health testing. It requires a 20-foot length for vision testing.



Adjacency Diagrams

Campus master planning

- Site Analysis
- Utility locations
- Siting options for future identified facilities
- Preliminary scoping for 9th Grade Academy, District Admin Building, + conference space
- Preliminary cost estimates based on rough scoping



Schematic Design Phase



Schematic Design Phase



Schematic Design Phase



Design Development Phase

GENERAL SHEET NOTES

1. ALL WORK SHALL BE IN ACCORDANCE WITH THE LATEST EDITIONS OF ALL CODES AND REGULATIONS.
2. ALL WORK SHALL BE IN ACCORDANCE WITH THE LATEST EDITIONS OF ALL CODES AND REGULATIONS.
3. ALL WORK SHALL BE IN ACCORDANCE WITH THE LATEST EDITIONS OF ALL CODES AND REGULATIONS.
4. ALL WORK SHALL BE IN ACCORDANCE WITH THE LATEST EDITIONS OF ALL CODES AND REGULATIONS.
5. ALL WORK SHALL BE IN ACCORDANCE WITH THE LATEST EDITIONS OF ALL CODES AND REGULATIONS.
6. ALL WORK SHALL BE IN ACCORDANCE WITH THE LATEST EDITIONS OF ALL CODES AND REGULATIONS.
7. ALL WORK SHALL BE IN ACCORDANCE WITH THE LATEST EDITIONS OF ALL CODES AND REGULATIONS.
8. ALL WORK SHALL BE IN ACCORDANCE WITH THE LATEST EDITIONS OF ALL CODES AND REGULATIONS.
9. ALL WORK SHALL BE IN ACCORDANCE WITH THE LATEST EDITIONS OF ALL CODES AND REGULATIONS.
10. ALL WORK SHALL BE IN ACCORDANCE WITH THE LATEST EDITIONS OF ALL CODES AND REGULATIONS.

Dekker Perich Sabatini

1700 UNIVERSITY DRIVE, SUITE 100
 ALBUQUERQUE, NM 87102
 TEL: 505.263.1111
 FAX: 505.263.1112
 WWW.DPSABATINI.COM




REFERENCE KEYNOTES

Key Value	Keynote Text
1.00	CONCRETE FLOOR SLAB
1.01	CONCRETE FLOOR SLAB WITH REINFORCING BARS
1.02	CONCRETE FLOOR SLAB WITH REINFORCING BARS AND DIMENSIONAL CHANGES
1.03	CONCRETE FLOOR SLAB WITH REINFORCING BARS AND DIMENSIONAL CHANGES AND DIMENSIONAL CHANGES
1.04	CONCRETE FLOOR SLAB WITH REINFORCING BARS AND DIMENSIONAL CHANGES AND DIMENSIONAL CHANGES AND DIMENSIONAL CHANGES
1.05	CONCRETE FLOOR SLAB WITH REINFORCING BARS AND DIMENSIONAL CHANGES AND DIMENSIONAL CHANGES AND DIMENSIONAL CHANGES AND DIMENSIONAL CHANGES
1.06	CONCRETE FLOOR SLAB WITH REINFORCING BARS AND DIMENSIONAL CHANGES AND DIMENSIONAL CHANGES AND DIMENSIONAL CHANGES AND DIMENSIONAL CHANGES AND DIMENSIONAL CHANGES
1.07	CONCRETE FLOOR SLAB WITH REINFORCING BARS AND DIMENSIONAL CHANGES AND DIMENSIONAL CHANGES AND DIMENSIONAL CHANGES AND DIMENSIONAL CHANGES AND DIMENSIONAL CHANGES AND DIMENSIONAL CHANGES
1.08	CONCRETE FLOOR SLAB WITH REINFORCING BARS AND DIMENSIONAL CHANGES AND DIMENSIONAL CHANGES AND DIMENSIONAL CHANGES AND DIMENSIONAL CHANGES AND DIMENSIONAL CHANGES AND DIMENSIONAL CHANGES AND DIMENSIONAL CHANGES
1.09	CONCRETE FLOOR SLAB WITH REINFORCING BARS AND DIMENSIONAL CHANGES AND DIMENSIONAL CHANGES AND DIMENSIONAL CHANGES AND DIMENSIONAL CHANGES AND DIMENSIONAL CHANGES AND DIMENSIONAL CHANGES AND DIMENSIONAL CHANGES AND DIMENSIONAL CHANGES
1.10	CONCRETE FLOOR SLAB WITH REINFORCING BARS AND DIMENSIONAL CHANGES AND DIMENSIONAL CHANGES AND DIMENSIONAL CHANGES AND DIMENSIONAL CHANGES AND DIMENSIONAL CHANGES AND DIMENSIONAL CHANGES AND DIMENSIONAL CHANGES AND DIMENSIONAL CHANGES AND DIMENSIONAL CHANGES

LEGEND

	CONCRETE FLOOR SLAB
	CONCRETE FLOOR SLAB WITH REINFORCING BARS
	CONCRETE FLOOR SLAB WITH REINFORCING BARS AND DIMENSIONAL CHANGES
	CONCRETE FLOOR SLAB WITH REINFORCING BARS AND DIMENSIONAL CHANGES AND DIMENSIONAL CHANGES

KEY PLAN



FIRST FLOOR PLAN - AREA A

PROJECT NO: AE-101A

BERNALILLO HIGH SCHOOL RENOVATION & REPLACEMENT

250 ISIDRO SANCHEZ RD
 BERNALILLO, NM 87004

Construction Document Phase

AE-101A

Design Development Phase



Construction Document Phase



Schedule

October 20th – School board work session

- developed program
- Project goals
- Site analysis

Goal Setting

What are the **big picture** things that this new school needs to be/do to succeed?

Think about:

- Function
- Identity/Image
- Relationship to site/community
- Long term operations

Preliminary Program

PROGRAM STATEMENT - DRAFT

Artesia Freshman Academy
September 2014 (v1)

Full program is based on core of 450 students

ADEQUACY

New High School Compliance to PSFA Adequacy Standards for 450 Students				
Description of Space	Qty.	Area Each	Net SF	PSFA Adequacy Standards & Comments
1.0 GENERAL CLASSROOM				
Core Classrooms (math lang arts, soc studies)	18	810	14,580	25 nsf + 2 nsf storage per student, 650 min sf
Science Lab	6	1,200	7,200	4 nsf per student in program
Science Prep Room	6	80	480	
Computer Lab	3	1,350	4,050	900 nsf min, 3 nsf/student
Total square footage			26,310	
2.0 SPECIAL EDUCATION				
Spec.Ed Classroom (type I; A, B, C Levels)	3	500	1,500	450 sf minimum, 15 students max
Special Ed - (D level)	1	1,000	1,000	450 sf minimum, 8 students max
Kitchenette	1	80	80	included in tare space
OT/PT	1	500	500	
Total square footage			1,500	
3.0 CAREER AND TECHNICAL				
			0	650 nsf min, 4 nsf/student in program
			0	650 nsf min, 4 nsf/student in program
Total square footage			0	

PROPOSED

Design Program for 450 Students				
Description of Space	Qty.	Area Each	Net SF	Comments
1.0 GENERAL CLASSROOM				
Core Classrooms (math lang arts, soc studies)			0	technology integration?
Science Lab			0	
Science Prep Room			0	
Computer Lab			0	
Total square footage			0	
2.0 SPECIAL EDUCATION				
Spec.Ed Classroom (type I; A, B, C Levels)			0	how many special students?
Special Ed - (D level)			0	how many special students?
Kitchenette				
OT/PT			0	where does OT/PT take place? Full time staff?
Total square footage			0	
3.0 CAREER AND TECHNICAL				
			0	need to learn more about career and technical classes
			0	
Total square footage			0	

Preliminary Program

ADEQUACY

New High School Compliance to PSFA Adequacy Standards for 450 Students				
Description of Space	Qty.	Area Each	Net SF	PSFA Adequacy Standards & Comments
4.0 MEDIA CENTER				
Media Center	1	2,000	2,000	minimum 2000 sf, 3nsf/student
A/V Storage	1	175	175	
storage				
Office/workroom	1	450	450	1 nsf/student
Total square footage			2,625	
5.0 PERFORMING ARTS				
Muisc/Band	1	2,250	2,250	5 nsf/student
Storage/practice rooms				
platform				
Art	1	2,250	2,250	5 nsf/student
Total square footage			2,250	
6.0 PHYSICAL EDUCATION				
Gym (basketball court)	1	6,500	6,500	6500 for high school aged students
Bleachers	1	2,025	2,025	1.5(450sf) x3 sf
Locker rooms	2	1,500	3,000	
office	2	150	300	
storage				Included in TARE
Total square footage			11,825	
7.0 FOOD SERVICE / STUDENT DINING				
Cafeteria	1	3,375	3,375	15 nsf/student
Kitchen	1	1,700	1,700	1,700 min sf, 2nsf per meal
Total square footage			3,375	
8.0 SUPPORT AREAS				
custodian	1	225	225	0.5 nsf/student
Central Storage	1	450	450	1 nsf/student
Total square footage			675	

PROPOSED

Design Program for 450 Students			
Qty.	Area Each	Net SF	
		0	technology integration?
		0	
		0	
		0	
		0	
		0	
		0	
		0	
		0	
		0	
		0	
		0	
		0	
		0	
		0	assumed 2 seatings with 225 students each
		0	what meals are served?
		0	
		0	
		0	

Preliminary Program

Description of Space	ADEQUACY				PROPOSED		
	Qty.	Area Each	Net SF	PSFA Adequacy Standards & Comments	Qty.	Area Each	Net SF
9.0 ADMINISTRATION							
Admin Suite	1	675	675	150 nsf + 1.5 nsf by school capacity			0
Lobby				included in tare			0
Reception/Waiting	1	0	0	part of admin suite			0
Principal Office	1	0	0	part of admin suite			0
Conference Room	1	0	0	part of admin suite			0
Records Room	1	0	0	part of admin suite			0
supply				part of admin suite			0
ISS				part of admin suite			0
Faculty Lounge	1	450	450	1 nsf/student			0
health	1	450	450	1 nsf/student			0
Nurse Office	1	0	0	part of clinic			0
Treatment/Cot Area with Curtains	1	0	0	part of clinic			0
Clinic Storage	1	0	0	15 sf min			0
Restroom	1	0	0	part of clinic			0
Counselor Office	1	450	450	1nsf/student			0
Teacher Workroom 6-12	1	600	600	1nsf/student 150 sf min			0
Total square footage			2,625				0
NET BUILDING AREA (NSF)							
Total net square footage			33,735				0
TARE Percentage on Net Building Area			30%	<i>PSFA Maximum Allowable Tare</i>			30%
GROSS BUILDING AREA (GSF)							
Total Gross Square Footage			48,193				0

Next Steps

Survey

Meeting schedule

- Regular Steering Committee meeting schedule
- October 20th – work session

User Interviews:

- General education
- Special education
- Career/technical programs
- Administrative staff
- PE
- Food service
- Maintenance – continue OPR document
- Technology

Onsite charrette

Bond support material